



PRESENT YOUR FORENSIC ANALYTICS WITH 100% ASSURANCE!

DESIGNED FOR FORENSIC PROFESSIONALS
FOR ON SITE ACQUISITION, EXAMINATION,
ANALYSIS, REPORTING AND DATA RECOVERY



ONSITE FORENSIC



Rugged



Light Weight



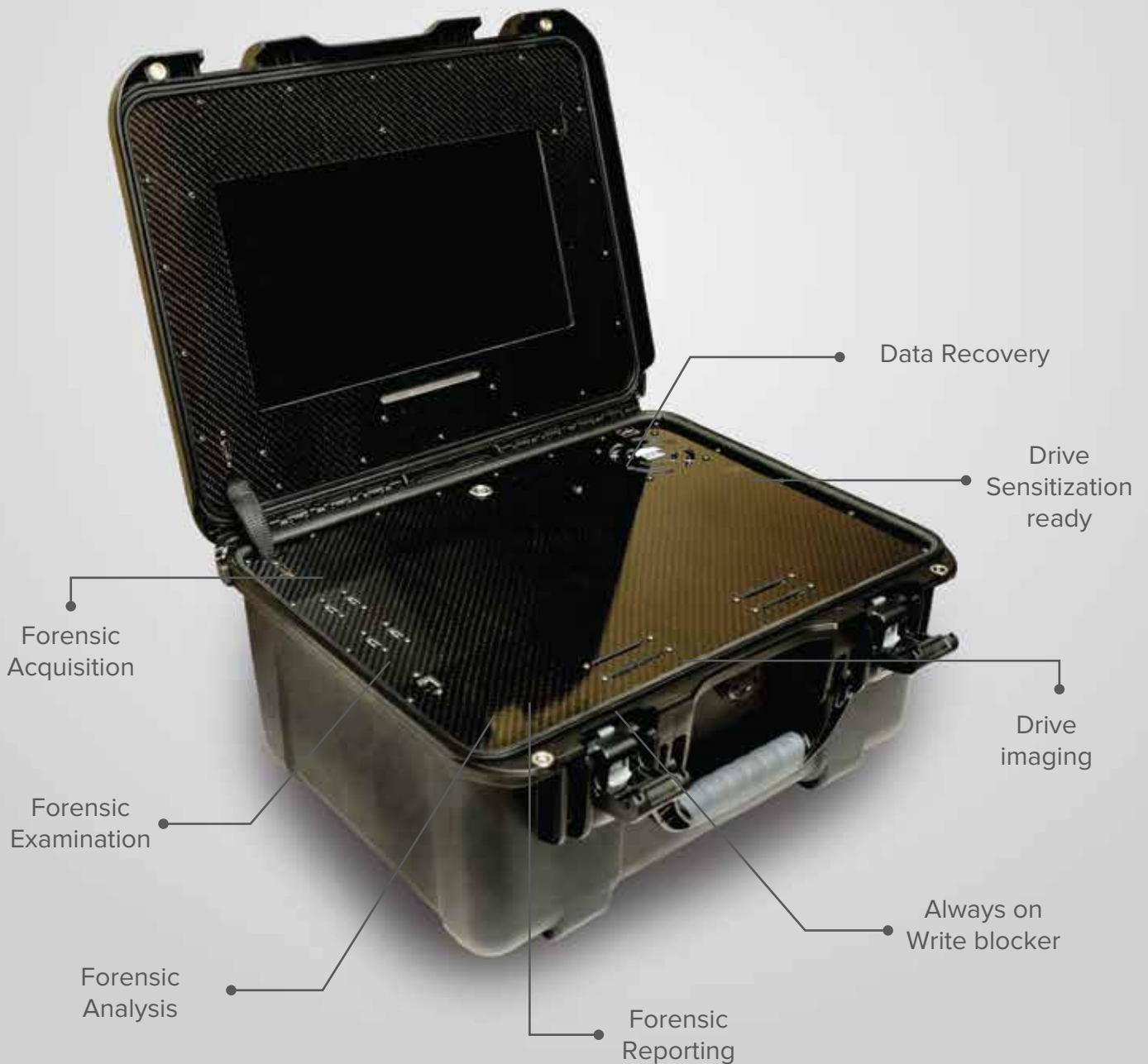
Compact



Powerful

BUILT FOR PROFESSIONALS

Field Forensic is state-of-art machine designed for onsite forensic & data recovery.



PRODUCT DESCRIPTION



POWERED BY

AMD Ryzen 7/9
8 core/ 16 threads
600 watt Power Supply
64 GB Ram
2 TB nVME SSD
4 Port USB 3.0
15.6" Touch Screen
Bluetooth
LAN
Wifi -6
Waterproofed Cord Connector IP67 / IP69K

EQUIPPED WITH

Field Forensic is equipped with



Write Blocker
Software



Forensic Imaging



Data Sanitization

WRITE BLOCKER

WRITE PROTECTED



HDD / USB / IDE

All SATA & USB ports are write protected by ForensicSoft Safe block write blocking software.

Faster Than Hardware. SAFE Block allows for write locked, Windows- based, disk imaging speeds that are significantly faster than imaging in Windows using commercially available hardware-based write blockers.

Blocks Multiple Devices. SAFE Block provides the ability to simultaneously write block as many disk devices as are connected to a computer without the need for multiple expensive hardware write blocking devices. There is no limit to what you can protect!

FORENSIC IMAGING

SECURING OF EVIDENCE

Create forensic images to secure, analyse and process evidence with other tools you'll find in other traditional forensic file formats, including verification, checksums and PDF reports.

The software package includes additional tools for reconciling disks and existing images, separate checksum calculations, etc.

FORENSIC FORMATS

AFF, E01, Ex01 | Checksums: SHA-1, SHA-256, SHA-512, MD5, CRCC32

VM Image Formats: VMDK, VHD, VHDX, VDI | Proprietary Formats: SmartImage, Bit Image

File systems: NTFS, FAT, ExFAT, HFS+

DATA SANITIZATION



HDD | SSD | USB

Equipped with is the universal solution for the high security deletion of hard disks and other storage media.

TECHNICAL SPECIFICATIONS

Areas of Application Secure deletion, userfriendly even for non-professionals Simple & fast deletion prior to Cloning ,resale or transfer of ownership

User-performed deletion when handling highly sensitive data Delete for in accordance with international standards.

Highly
secure
deletion

Wiping
Destination
hard disk
before
imaging

Reporting

IDE/ SATA/
USB

Performance
up to 6GB/min
hardware
specific

18
security
levels

15
international
security
standards

CUSTOMIZATION



HDD | SSD | USB | M.2 NVME | RAID | FLASH

Field -forensic can be customized with PC-3000 tools. with makes it one of the most powerful tool to work with, complex cases.

PC-3000 professional systems represent the high - end solutions for HDD & SSD data recovery from the variety of storage devices such as SATA/IDE HDD's, Raid array, SSD, Flash drives.

PC-3000 PORTABLE SSD ULTIMATE | PC-3000 EXPRESS ULTIMATE
PC-3000 UDMA ULTIMATE | PC-3000 FLASH

PC-3000 PORTABLE

PC-3000 PORTABLE ULTIMATE SYSTEM



HDD | SSD | USB | NVME | RAID

A must-have tool for everyday forensics data recovery thanks to the mobility, the support of the largest number of storage media along with Standalone, Easy and Full-Featured Modes and the highest efficiency.

THE MOST UNIVERSAL TOOL to get evidence from damaged storage media.

The PC-3000 Portable III Ultimate System is a hardware-software solution to recover digital evidence from logically or/and physically damaged SATA/ PATA/ USB Hard Disk Drives, SATA/ M.2 PCIe NVMe Solid State Drives, and RAID. Besides you may overcome the password protection if necessary. The tool is primarily intended for digital forensics experts and has many useful forensic features.



4 DIAGNOSTIC PORTS TO RECOVER EVIDENCE | FROM 3 DRIVES AT THE SAME TIME
TARGET SATA1 AND SATA2 PORT FOR DATA | IMAGING TO DESTINATION DRIVES
HARDWARE WRITE PROTECTION TO ENSURE | SD/ MicroSD MEMORY CARDS SUPPORT
LOGGING AND REPORTS GENERATION | BREAK THROUGH: M.2 PCIe NVMe SSD SUPPORT!
FASTER AND EASIER WORK WITH USB HDD/ SSD/ FLASH DRIVES | EVIDENCE INTEGRITY

PC-3000 EXPRESS



HDD | SSD | USB | RAID

The fastest, most efficient and powerful product that ever existed. The flagship data recovery solution when customer's time and the speed of data recovery are top priorities.

4 SATA ports with speed up to 150 MB/s

2 PATA ports with speed up to 133 MB/s



All specialized PC-3000 utilities are capable of performing the following actions:

Diagnose the HDD in technological mode verify and recover the HDD service area

Read-write Flash ROMs area

Load service information access program LDR

Modify HDD heads configuration tables review defect tables (P-list, G-list, T-list, etc.)

Hide found defects of magnetic surface recalculate (initialize) translator change configuration and identification parameters

Reset logs and S.M.A.R.T parameters watch and reset HDD passwords work with the Data Extractor

PC-3000 UDMA

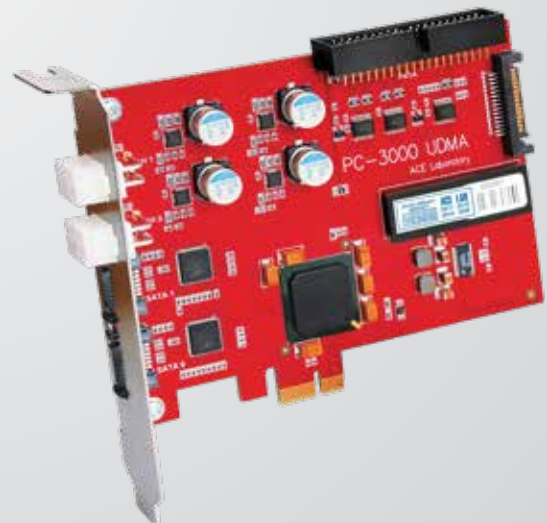


HDD | SSD | USB | RAID

The optimal combination of high efficiency, the main workhorse for daily use and data recovery lab.

- 2 SATA ports with speed up to 150 MB/s

- 1 PATA ports with speed up to 133 MB/s



All specialized PC-3000 utilities are capable of performing the following actions:

Diagnose the HDD in technological mode verify and recover the HDD service area

Read-write Flash ROMs area | Load service information access program LDR

Modify HDD heads configuration tables review defect tables (P-list, G-list, T-list, etc.)

Hide found defects of magnetic surface recalculate (initialize) translator

Change configuration and identification parameters | Reset logs and S.M.A.R.T parameters

Watch and reset HDD passwords work with the Data Extractor

PC-3000 DATA EXTRACTOR

The Data Extractor is a professional software product functioning in tandem with PC-3000 hardware software products. It is intended for recovering data from SATA, IDE, USB HDD,SSHD

The Data Extractor is the essential part of the following PC-3000 data recovery systems:

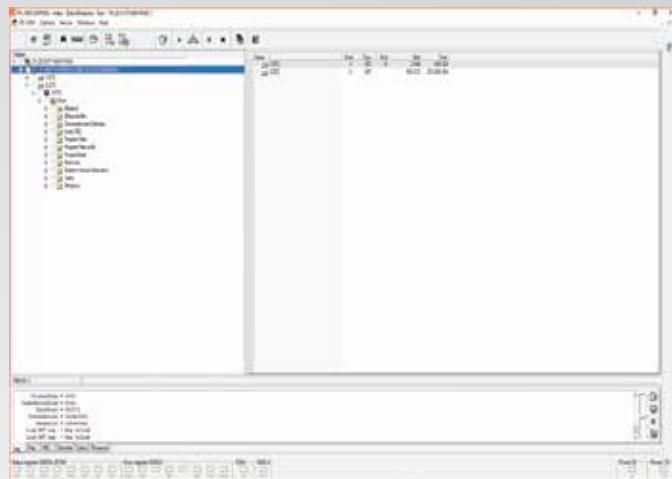
PC-3000 Express + Data Extractor Express + SSD + RAID

PC-3000 UDMA + Data Extractor UDMA + SSD + RAID

PC-3000 Portable + Data Extractor Portable III + SSD + RAID

The Data Extractor supports the most popular file systems, FAT, exFAT, XFS, ReiserFS, VMFS, WFS0(DVR) it is possible to build the used/unused sector map, the file system metadata map, the map of selected files and folders, the specialized modes, such as Partition Data Analysis enable to recover data from damaged file systems (data deleted by users, virus attacks, deleted metadata, software failure etc).

Data recovery from virtual drives,(Flat,VMDK, VHD, VHDX, DMG) and encrypted partitions (FileVault, Bitlocker, TrueCrypt) are supported.



FORENSIC SOFTWARE

FILED FORENSIC

Field-Forensic is designed for onsite, offsite forensic use and can be equipped with forensic analysis software for Hard drives and Mobiles, as per requirement's.

Belkasoft

Encase

Access Data FTK

Magnet Axiom

BlackBag

Detego

FORENSIC SOFTWARE FOR MOBILE

UFED for PC

HANCOM MD-NEXT

HANCOM MD-RED

HANCOM MD-LIVE

Oxygen

MOBILedit Forensic Express



**DATATM
TRACK
SYSTEM**

DATA RECOVERY SOLUTIONS



#409 Fourth Floor, Shagun Arcade
Vijay Nagar Square, Indore, MP 452010
+91 (0) 731-4035038, +91 9425055817, +91 9575999939
support@datatracksystem.net | www.datatracksystem.net

Trademark: Data Track System & Field Forensic are registered trademark of Data Track System.
All other trademark are of their respective holders.